



BIOACOUSTIC MAT™ USER MANUAL

Vibro Acoustic Therapy system
Sleep, Relax, Renew and Energize



RICHWAY & FUJI BIO INC.

1314 South King Street Suite 520, Honolulu, HI 96814 USA Tel: 808-589-2800 Toll-Free: 855-338-6410 Fax: 808-597-1651
www.richwayandfujibio.com



BioAcoustic Mat™ User Manual

Vibroacoustic Therapy System.
Sleep, Relax, and Renew

Contents

A. Safety/Precautions	1
B. Soundtracks	2
C. Product Components	4
D. Product Features	5
E. Setting up the BioAcoustic Mat™	6
F. Product Operation	6
G. Using an External Sound Source	7
H. Using Headphones	8
I. Useful Information	8
J. Detailed Specifications and Standards	9
K. Customer Service and Warranty	9
L. Product Warranty	10

A. Safety Precautions

Read and follow all of the instructions in this manual before using. Proper use of the BioAcoustic Mat™ will prevent harm to the user and damage to private property. Only use the BioAcoustic Mat™ for the purposes specified in this manual.

Danger, to reduce the risk of electrocution:

- Do not use or store near water. If the BioAcoustic Mat™ gets wet, unplug it immediately.
- Do not alter, change, modify or disassemble the product.
- Use proper voltage.
- Do not use if the power cord or plug appears damaged.
- Do not expose the cord to hot material.

Warning, to reduce the risk of injury or product malfunction:

- If you do not feel well due to the BioAcoustic Mat™, stop using it and consult a physician.
 - Unplug the BioAcoustic Mat™ when not in use or when cleaning.
 - Never leave the BioAcoustic Mat™ unattended.
 - Only competent adults should operate the BioAcoustic Mat™.
 - The elderly and children should be monitored.
 - Do not use outdoors.
 - Do not pull or yank on the power cord.
 - Do not stand or place heavy objects on the BioAcoustic Mat™.
 - Do not place sharp objects on or near the BioAcoustic Mat™.
 - Avoid external shocks to the device, such as dropping or striking it with force.
- Consult your doctor prior to using this product if:**
- You are pregnant, have a pacemaker, or have any concerns regarding your health.
 - Never use this product directly on swollen or inflamed areas or skin eruptions.
- Stop using the BioAcoustic Mat™ if it is not functioning properly.
Call Customer Service at (800) 589-2800.

B. Soundtracks

Vibroacoustic Configuration

(SET 1) ENERGIZE

Guitar, piano, digital sound, bass
Mono and binaural high alpha and beta
entrainment

- 1. Energize (track length 5:18)**
Low pitch – 41 Hz - 73 Hz
Peak wavelength 41Hz
- 2. Energize (track length 4:40)**
Low pitch 36 Hz - 61 Hz
Peak wavelength 41Hz
- 3. Energize (track length 5:55)**
Low pitch 36 Hz - 65 Hz

(SET 2) RELAX

Digital ocean, surf, and nature sounds

- 1. Relax (track length 5:15)**
Low pitches centered around 40 Hz, 52 Hz and 68 Hz (34 Hz)
Mono and binaural alpha and theta entrainment (5 Hz - 8 Hz)
- 2. Relax (track length 4:40)**
Low pitch – 36 Hz
Binaural alpha, and theta entrainment
- 3. Relax (track length 5:35)**
Low pitch – 32 Hz
Binaural alpha, and theta entrainment

(SET 3) SLEEP

Digital sound
Mono and binaural delta entrainment

- 1. Sleep (track length 4:58)**
Low pitch – 32 Hz
- 2. Deep sleep (track length 5:00)**
Low pitch – multiple between 27.5 – 44 Hz
- 3. Deep sleep (track length 6:05)**
Low pitch – multiple between 34 – 52 Hz

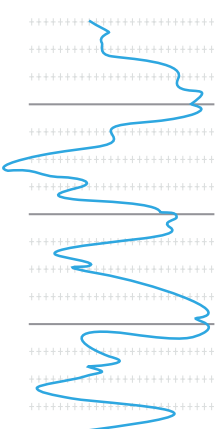
(SET 4) STRESS RELIEF

Piano, flute, digital sound

- 1. Stress relief (track length 3:30)**
Low frequencies – 36 Hz – 41 Hz
Mono and binaural theta entrainment 4 Hz – 6 Hz
- 2. Stress relief (track length 3:00)**
Low frequencies – 32 Hz – 65 Hz
Mono and binaural theta entrainment 4 Hz – 6 Hz
- 3. Stress relief (track length 3:40)**
Low frequencies – 27.5 Hz – 55 Hz
Mono entrainment at delta, theta and alpha.
Binaural theta entrainment 4 Hz – 6 Hz

Delta wave (0.5-4.0 Hz)

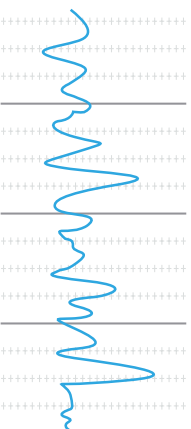
Delta waves are associated with the deepest levels of physical relaxation. Delta is the rhythm of dreamless sleep and its presence usually corresponds with physical rejuvenation and healing.



Theta wave (4.0-7.0 Hz)

Theta waves reflect a state of mind that is attuned to intense creativity, visualization, and subconscious problem solving in a non-sleep state, as well as emotional healing in the sleep state.

Theta waves are produced during deep meditation, dreaming and daydreaming.



Alpha wave (7.0-12.0 Hz)

Alpha waves indicate an alert state with a quiet mind (e.g. a person who has completed a task and sits down to rest is often in an Alpha state).

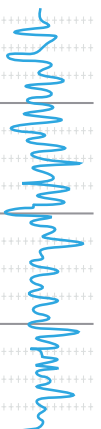
Increased Alpha is often present in the brainwaves of people who practice meditation, yoga, and tai chi.



Beta wave (12.0-27.0 Hz)

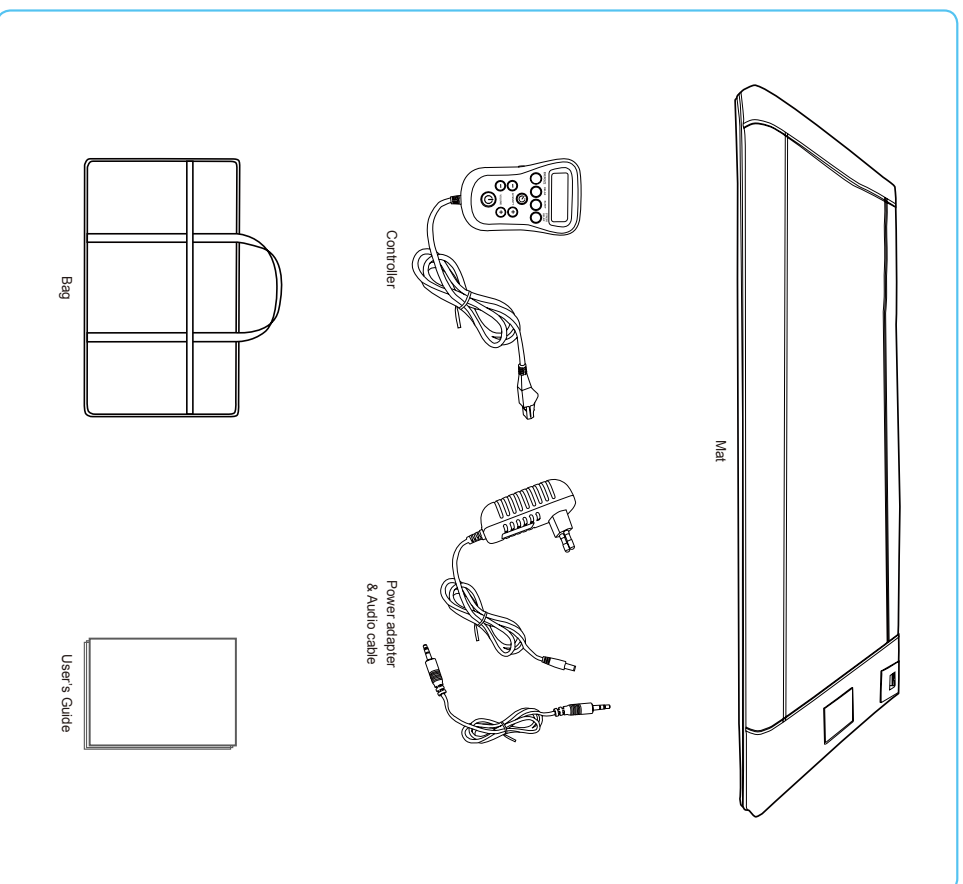
Beta waves are associated with normal waking states that we experience from day to day at work and play. In Beta states, we are highly alert and focused – busy computing, arranging, and organizing – making sense of the external world.

Beta is increased in moments of stress or anxiety, enabling us to manage situations and solve immediate problems.



C. Product Components

BioAcoustic Mat™ Professional and Single will come with the following components.



4

D. Product Features

BioAcoustic Mat™

1. Stereo audio speaker
2. Low frequency generator
3. Power adapter jack
4. Controller jack
5. Headphone jack



Controller

1. Display window
2. Track selection button
3. Vibration control button
4. Power button
5. Volume button
6. Timer button
7. Power adapter
8. Audio cable



5

E. Setting up the BioAcoustic Mat™

1. Lay the BioAcoustic Mat™ on a flat surface.
2. Plug the controller into the controller jack located on the front top left of the BioAcoustic Mat™.
3. Connect the power adapter to the power adapter jack. Then plug in the BioAcoustic Mat™ to an outlet.



Controller Jack

Power adapter Jack

Warning • When using the BioAcoustic Mat™ with any heating mat, be sure to use a thin blanket between the two.

Notice • Stretching is a natural characteristic of new vinyl, and the first few times you use the mattress, some stretching will occur. The product is simply stretching under your body weight, and this is normal for the first few uses.

F. Product Operation

Selecting the Soundtrack

1. Press and hold the power button down for one second to turn on the unit. The BioAcoustic Mat™ will automatically start on the Energize therapy soundtrack. It will be displayed on the controller's display window. You can adjust the intensity or volume to the desired level. (See page 11)
2. If you leave it on the Energize therapy session, the BioAcoustic Mat™ will automatically play the three Energize therapy soundtracks.
3. To play Energy therapy session track two, press the Energize button again.
4. To play Energy therapy session track three, press the Energize button again.
5. When you press the Energize therapy session button after track three, the Energize therapy session will reappear on the display screen. Energize tracks one, two, and three will begin to play on repeat.

ENERGIZE
THERAPY SESSION

ENERGIZE
THERAPY TRACK 1

ENERGIZE
THERAPY TRACK 2

ENERGIZE
THERAPY TRACK 3

ENERGIZE
THERAPY SESSION

6

Notice • If you do not set the timer or change the soundtracks, the session will repeat itself.

Adjusting the vibration's intensity

The BioAcoustic Mat™ provides low frequency vibrations. To increase the intensity, press the + button. To decrease the intensity, press the – button.

Adjusting the volume

When changing the volume, press the + Volume button to increase the volume, and press the – Volume button to decrease the volume.

Timer

Press the timer button to select your desired run time. The BioAcoustic Mat™ can be set to run for 15, 30, 45, or 60 minutes. The BioAcoustic Mat™ will automatically shut down after desired time.

	Display Shows
First Press	SESSION TIMER 60 MINUTES
Second Press	SESSION TIMER 45 MINUTES
Third Press	SESSION TIMER 30 MINUTES
Fourth Press	SESSION TIMER 15 MINUTES
Fifth Press	Timer Off

G. Using an External Sound Source

Play your own music with the BioAcoustic Mat™.

Operating

1. Using the 3.5mm cable (audio cable included), plug the cable from your audio device into the external sound input located on the left side of your BioAcoustic Mat™ controller.
2. The BioAcoustic Mat™ will start playing the music from your audio device. Adjust the volume on the connected device to near maximum. Then use the Volume + and - buttons on the controller to adjust the volume level.

External sound input



7

H. Using Headphones

You can connect your headphones to the BioAcoustic Mat™ and listen to music without disturbing others.

Operating

1. Connect your headphones to the headphone jack located on the front top left of the BioAcoustic Mat™. Adjust the volume with the Volume + and – buttons on the BioAcoustic Mat™ controller.



Headphone jack



Notice

- Use high quality headphones to get the most out of your BioAcoustic Mat™ experience.

I. Useful Information

- Before cleaning the product, be sure to turn off the power and unplug the power cord.
- When wiping the outside of the product, use a damp cloth with soap or mild detergent.
- Do not use strong chemical detergent, as it may damage the plastic or cushion area.
- Do not stand or place heavy objects on the BioAcoustic Mat™.
- Store in a cool dry area.

J. Detailed Specifications and Standards

BioAcoustic Mat™ PROFESSIONAL

Item	Contents
Product Name	BioAcoustic Mat™
Model Name	BT-C 7000MAX™ Professional
Manufacturer's Company Name and Address	Company Name: R&L Co., Ltd. Address: (Soha-dong, Ase Gwangmyung Tower, 11th floor) 108, Haan-ro, Gwangmyeong-si, Gyeonggi-do, Republic of Korea
Country of Manufacture	Republic of Korea
Product Size (L x W x H)	73" X 28" X 3" (1850 X 700 x 80 mm)
Serial Number	Separately marked
Weight	32 lbs
Adapter	Input(100-240V~50/60Hz 0.5A MAX), Output(12V, 2500mA)

BioAcoustic Mat™ SINGLE

Item	Contents
Product Name	BioAcoustic Mat™
Model Name	BT-C 7000MAX™ Single
Manufacturer's Company Name and Address	Company Name: R&L Co., Ltd. Address: (Soha-dong, Ase Gwangmyung Tower, 11th floor) 108, Haan-ro, Gwangmyeong-si, Gyeonggi-do, Republic of Korea
Country of Manufacture	Republic of Korea
Product Size (L x W x H)	79" x 39" X 3" (2000 x 1000 x 80 mm)
Serial Number	Separately marked
Weight	37 lbs
Adapter	Input(100-240V~50/60Hz 0.5A MAX), Output(12V, 2500mA)

K. Customer Service and Warranty

Customer Center Information

If your BioAcoustic Mat™ is not working properly call our Customer Service Center.

CUSTOMER SERVICE CENTER

North America
Richway & Fuji Bio Inc.
Tel: 1-808-589-2800
Toll-Free: 1-855-338-6410
(USA, Canada, Guam, Japan)
Homepage: www.richwayandfuji.bio.com
Email: rma@richwayusa.com

How to Discard a Product

Please follow your city or state laws regarding disposing or recycling your BioAcoustic Mat™.

FCC Notice

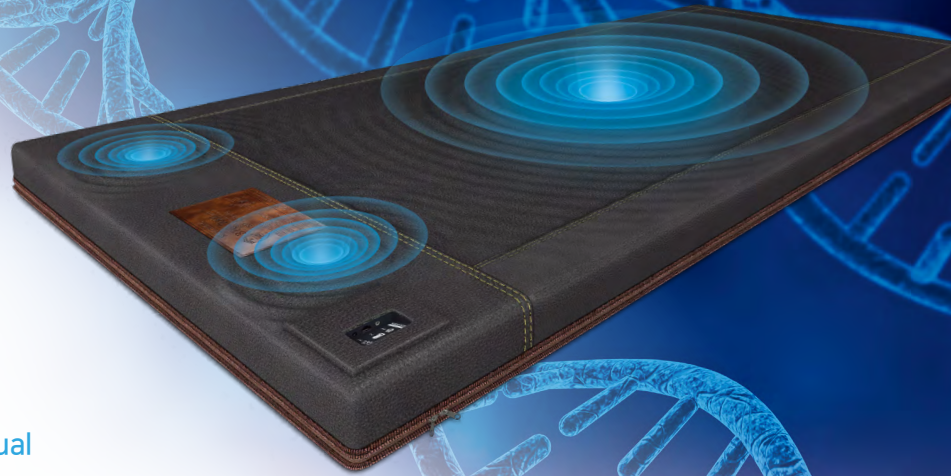
This equipment complies with the limits for a Class B digital device, pursuant to Part 15 of the FCC Rules. Operation is subject to the following two (2) conditions:
(1) This device may not cause harmful interference; and
(2) This device must accept any interference received, including interference that may cause undesired operation.

Hear and Feel the therapy

Music and Vibration

Richway BioAcoustic Mat

Vibroacoustic Therapy System User Manual



L. Product Warranty

Place of Purchase	Product Name	BioAcoustic Mat™	Model Name	BTC 7000MX™
	Warranty Period	1 year from delivery date	Serial Number	
	Date of purchase		Place of Purchase	
Customer Information	Name		Purchase price	

Richway & Fuji Bio warrants the covered product to be free from defects and malfunctions at the time sold. "Defects" as used in this warranty, is defined as imperfections, which impair or impede the function and use of the product.

How Long the Warranty Lasts

This warranty lasts 1 year from the date of delivery. This warranty extends to the original purchaser only. Coverage terminates if you sell or otherwise transfer ownership.

What This Warranty Covers

This warranty covers any defects or malfunctions in the electronic components and top cover replacement. If Richway & Fuji Bio determines that such goods are defective, within the period of this warranty, Richway & Fuji Bio will repair or replace the parts free of charge for the first year. Repair or replacement is the sole and exclusive remedy available to the buyer and shall constitute the fulfillment of all Richway & Fuji Bio obligations in respect to the goods furnished under this agreement.

What This Warranty Does Not Cover

This warranty does not cover abuse, misuse, natural disaster, insufficient or excessive electrical supply, ordinary wear, fading, failure to follow instructions and improper maintenance. Richway & Fuji Bio shall not be liable for any incidental or consequential damages as a direct result of negligence or misuse. This warranty does not extend to the purchase of opened, used, repaired, repackaged, and/or resealed products, including but not limited to sale of such products on internet sites and/or sales of such products on internet auction sites and/or sales of such products by surplus or bulk re-sellers. Any warranties or guarantees shall immediately cease and terminate as to any products or parts thereof which are repaired, replaced, altered, or modified, without the prior express and written consent of Richway & Fuji Bio.

How to Get Service

To obtain service under this warranty, contact your local Customer Service Center and provide the purchaser's name, RI (Richway Invoice) number, and a detailed description of the problem you are experiencing. They will provide you with a return merchandise authorization number (RMA). This number is required and must be placed in a visible area on the front of the package. Ship your product postage paid, include a copy of the original sales slip, credit card receipt or other proof of the date of the original retail purchase. If servicing within the first two (2) months, we will send you a prepaid shipping label to cover your shipping costs. If servicing from the third month and on, the customer is responsible for shipping costs to return the product for repair or replacement. We will cover the shipping costs to return the product back to the customer.

How Do State Laws Apply

This warranty gives you specific legal rights, and you may also have other rights which vary from state to state. Any implied warranties last the duration of this warranty. Some states do not allow limitations on how long an implied warranty lasts and some states do not allow the exclusion or limitation of incidental or consequential damages, so the limitations or exclusions may not apply to you.



RICHWAY & FUJI BIO INC. 1314 SOUTH KING STREET SUITE 520, HONOLULU, HI 96814 USA
TEL: (808) 589-2800 TOLL-FREE: (855) 338-6410 FAX: (808) 597-1651 WWW.RICHWAYANDFUJIBIO.COM

SHAOXING RICHWAY TRADING CO., LTD. ROOM 2703, ZHONGYANG BUILDING, YUMIN ROAD, KEQIAO DISTRICT, SHAOXING, ZHEJIANG, CHINA 312000
TEL: +86-575-8110-1350 FAX: +86-575-8110-1370

RICHWAY & LIFE JAPAN CORP. 2-6-41 NAKAHATA, ONOJO-SHI, FUKUOKA, JAPAN 816-0921 TEL: +81-92-575-1004 FAX: +81-92-575-1006

R&L CORPORATION 11F, ACE GWANGMYEONG TOWER B, 108 HAAN-RO, GWANGMYEONG-SI, GYEONGGI-DO, KOREA 14319
TEL: +82-2-6112-7700 FAX: +82-2-6112-7749 WWW.RICHWAYKOREA.COM